

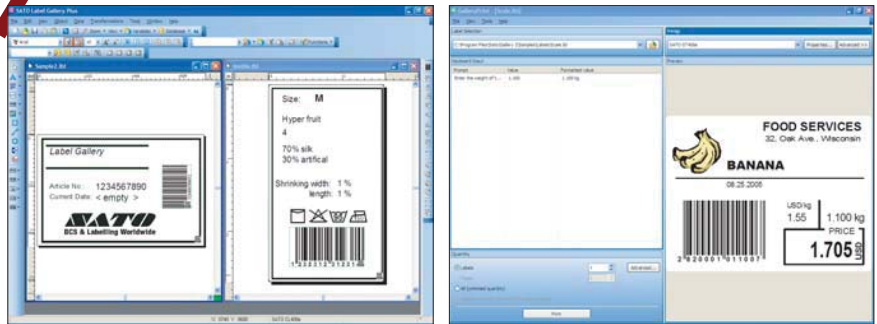


Label gallery2

Label Gallery is a powerful and versatile software labelling tool designed by professionals for the professionals.

No matter what your labelling needs are, Label Gallery is ready to boost your operational productivity and profitability. Available in affordable editions – Easy, Plus and TruePro/Network/Pocket – our software offers a scalable and versatile set of design tools, data handling functions and data integration possibilities.





User Friendly

You do not have to be an expert to use Label Gallery as helpful step by step wizards are always available to guide users to design sophisticated labels in the shortest possible time. In just a few clicks, any type of label layout can be designed by an endless combination of text, barcodes, graphics, RFID data, database, VB script and etc.

In addition, we also have a printing interface, GalleryPrint (TruePro Edition), which makes printing simple and efficient. Your label need only be designed once and you can open the label for printing without having to worry that the label design will be modified by other users.

Powerful and Versatile

Database connectivity

Database wizard's built in query builder and custom SQL scripting are available to retrieve data from any type of database, enterprise or local such as ASCII text file, Excel Spreadsheet, MS Access, Oracle or SQL Server. We have a powerful database manager, GalleryData, which allows you to create and manage all your database tables in Label Gallery Plus/TruePro.

Powerful functionality

To enhance customizability, a solid range of built-in functions are available:

User input prompting, user access rights configuration, print logging customization of data input interface, Active X integration with external applications, date and time stamping, lookup tables, visual basic scripting, data manipulation, and so on.

RFID

We support all frequently used RFID labels and RFID can be programmed (Plus or True Pro Edition only) with fixed data, or variable data from some data source such as database, keyboard prompt... Using Label Gallery, RFID can be incorporated as a part of your solution to make your business processes as warehousing, product tracking, transportation and many other applications.

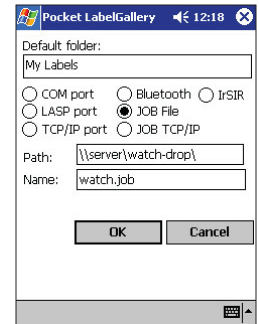
Multi-lingual printing

Many times, a label must include more than just one language and combine printed information with Eastern European, Asian and Arabic languages. Label Gallery supports Unicode based multi-lingual printing solution that enables you to create labels while reducing implementation and production cost.



Mobile Label Printing

Label Gallery offers Pocket LG (True Pro Edition), a unique mobile wireless label printing solution for Windows CE and Pocket PC mobile devices. You can print via IRDA, TCP/IP, Bluetooth or the print job can be used in combination with GalleryWatch (True Pro Edition) centralized print server for a truly mobile distributed printing application.



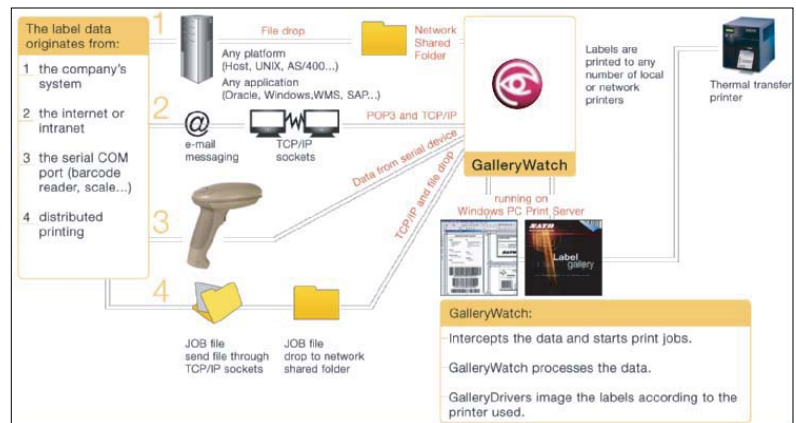
Application Generator

Label printing operators often stumble through the navigation of the features in advanced software. This is how GalleryForm (True Pro Edition) is best suited for the job, it is a unique application generator where you can customize data, entry forms, combo boxes, buttons, label preview, graphics/logo and linked multiple form applications. By clicking on the designed form file icon on the desktop, it will launch the application like any standalone application. Label printing operators need not require additional training to use it.

Integration Capabilities

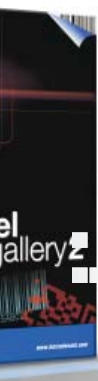
We have several ways in which we can integrate label printing with your existing software system.

- GalleryWatch (True Pro Edition) is an automated label generation tool. It watches or detects and manages changes in constantly updated data sources such as emails, unstructured reports, structured text, XML database. It provides an affordable middleware solution when automated printing is required.
- Using Label Gallery as a print engine running in the background, application developers can invoke or “call” Label Gallery through a rich Active X.
- You can even print labels directly from your SAP/R3 system utilizing Label Gallery only as a label design tool and printing without the need for a middleware solution. Besides, you can use Label Gallery as a design tool for XML format to be stored into SATO XML enabled printer and printing without the need for a middle ware solution.



SATO Label Gallery

Your Perfect Solution For Any Labeling Need



Label Gallery 2 Features by Editions

GENERAL	Free	Easy	Plus	True Pro
Up-to-date user interface with plenty of Wizards	•	•	•	•
Multi-lingual user interface Limited	Limited	•	•	•
Label locking and revision history			•	•
Customizable log file of printed labels			•	•
GalleryMemMaster – Font and picture download utility for label printers			•	•
LABEL DESIGN				
Basic label design tools, Unicode text...	•	•	•	•
Advanced label design elements and tools (e.g. text box, rich text formatting etc.)			•	•
All standard picture files and elements supported (JPG, WMF, GIF, BMP...)	•	•	•	•
Clipart gallery and fonts with industry commonly used symbols			•	•
True Print Preview saving time, labels and money	•	•	•	•
BARCODE AND RFID SUPPORT				
All industry-standard linear	•	•	•	•
2D, EAN.UCC 128 and RSS (Linear and Composite) barcode types		•	•	•
Advanced support for standards such as ASC (FACT), HIBC, Transfer Syntax and barcode compliance proofing			•	•
RFID smart label support (EPC Class 1/0/0+, I-Code, ISO 15693, My-d, Tag-IT, U-code EPC 1.19 and others)			•	•
DATA HANDLING AND PROCESSING				
Prompted fields with data validation	Limited	Limited	•	•
Serialization with custom base, roll over and increment control	Limited	Limited	•	•
Date and time fields with selectable format	•	•	•	•
Linked fields and Visual Basic Scripting for advanced data processing			•	•
DATABASE SUPPORT				
Link label fields with a database source		Limited	•	•
Import data from text (ASCII, CSV) and Excel files		•	•	•
Full ODBC, OLE DB and BDE database driver support for all database types, including Unicode			•	•
Wide range of record selection and filtering possibilities		Limited	•	•
Multiple database connections, built-in query builder and custom SQL scripting			•	•
GalleryData – Full-featured database manager			•	•
LABEL PRINTING				
Stand-alone printing support			•	•
GalleryPrint – Easy to use print only module				•
GalleryForm – Data entry & label printing application design for desktop computers and Windows label printing				•
Pocket LG – Mobile Windows label printing				•
INTEGRATION AND CONNECTIVITY				
Internal command language (job files, command line options, DDE)			•	•
ActiveX (Automation) and .NET programming interface			•	•
SAP R/3 – no middleware required				•
Middleware integration module (network printing; non-Windows systems and other applications like WMS, inventory, etc)				•
GalleryWatch – File drop support with data filtering				•
GalleryWatch – Serial (COM) port connectivity				•
GalleryWatch – Internet and distributed printing (POP3 and TCP/IP socket interfaces)				•
OTHER EDITIONS				
Print Only edition			•	•
Network edition (multi-user licensing, suitable also for Citrix and Terminal Server environments)				•

*Supports English, Simplified Chinese and German languages only.

SATO America, Inc.

10350-A Nations Ford Road, Charlotte, NC 28273
 Phone: (704) 644-1650 Fax: (704) 644-1662
 E-mail: satosales@satoamerica.com